

Monitoring Experiences from the Life Project Gestire2020



Dr. Sönke Hardersen
Reparto Carabinieri Biodiversità di Verona
Centro Nazionale Carabinieri Biodiversità "Bosco Fontana"

Gestire2020 Partners



LIFE GESTIRE 2020 - Nature Integrated Management to 2020.
La strategia integrata per Rete Natura 2000 e la biodiversità in Lombardia



Support EUSALP

Monitoring: The repeated collection and analysis of observations and measurements to evaluate changes in populations of species and environmental conditions.

Dallmeier, et al. (2013) Framework for Assessment and Monitoring of Biodiversity, Encyclopedia of Biodiversity, second edition, 545-559.



Monitoring: The repeated collection and analysis of observations and measurements to evaluate changes in populations of species and environmental conditions.

To analyse change it is important to:

- use the same method
- monitor the same population

Monitoring: The repeated collection and analysis of observations and measurements to evaluate changes in populations of species and environmental conditions.

Nature Conservation 20: 37–78 (2017)
doi: 10.3897/natureconservation.20.12687
<http://natureconservation.pensoft.net>

CONSERVATION IN PRACTICE

A peer-reviewed open-access journal
**Nature
Conservation**
Launched to accelerate biodiversity conservation

Guidelines for the monitoring of *Lucanus cervus*

Marco Bardiani^{1,2}, Stefano Chiari^{1,3}, Emanuela Maurizi^{1,3}, Massimiliano Tini³,
Ilaria Toni², Agnese Zauli^{1,3}, Alessandro Campanaro^{1,2},
Giuseppe Maria Carpaneto³, Paolo Audisio⁴

Life Gestire 2020



ACTION D.3: Innovative approach for the implementation of the Monitoring Programme form GESTIRE

“Scientific monitoring programme of the Natura 2000 network in Lombardy” (Life Gestire) to evaluate the conservation status of habitats and species present in Lombardy.

An innovative approach that involves the resources present of the territory; by involving the technical staff working in the Natura 2000 network and collaborating with that part of society which is sensitive to the issues of biodiversity conservation.

Contracts with experts with specific technical expertise for the monitoring of species and habitats.

Territorial Network 1

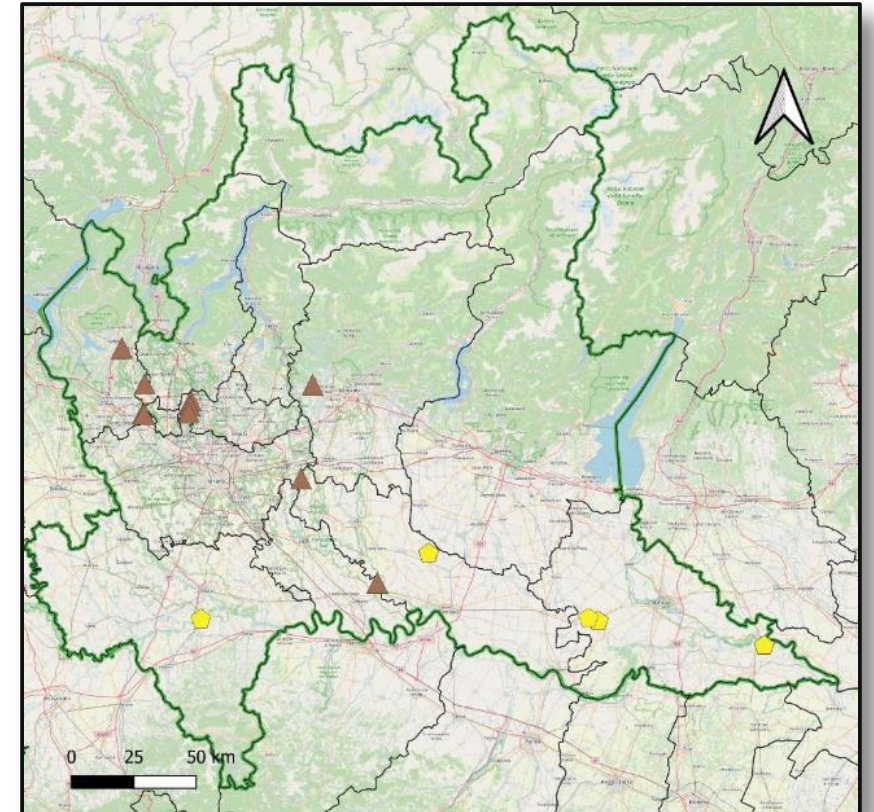
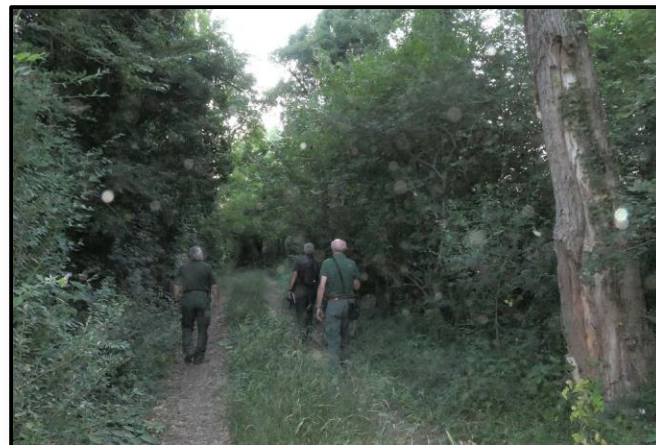
- **The Territorial Network involved the following volunteers:**

- Parco Groane: Guardie Ecologiche Volontarie;
- Municipality of Varese: Guardie Ecologiche Volontarie - Albertini Gianluca, Piatti Giovanna, Franzosi Sergio, Francesco Fornabaio
- Municipality of Milano: Guardie Ecologiche Onorarie - Omar Zito, Greta Guerriero, Stefano Adami
- Parco Pineta Pineta di Appiano Gentile e Tradate: Guardie Ecologiche Volontarie
- Parco Adda Sud: Guardie Ecologiche Volontarie - Mara Gasparotti, Marco Moretti, Luigi Galeani, Roberto Musumeci, Egidio Cabri, Marco Polonioli, Giancarlo Votta, Enzo Orsi, Angelo Draghetti, Maurizio Sesenna
- Compagnia Giubbe Verdi San Martino dall'Argine ODV: Bottoni Emanuela, Donati Francesco e Pignatti Alice
- Società Italiana per lo Studio e la Conservazione delle Libellule ODV: Morena Vailati, e Andrea Verdelli:
- Massimo Gilardi; Cristina Pappalardo



Example: Monitoring of *Lucanus cervus* with the help of the Territory Network (▲)

Monitoring of *Lucanus cervus* has been carried out in 10 sites in the provinces: Varese, Milano, Monza e Brianza, Bergamo, Cremona and Lodi.



Territory Network 2

Agreements with the Region Lombardy

- UNPeM – Unione Nazionale Pescatori a mosca
- IOLAS – Associazione per lo studio e la conservazione delle farfalle
- ODONATA.IT – Società italiana per lo studio e la conservazione delle libellule
- GRA – Gruppo Ricerche Avifauna Brescia
- CROS VARENNA – Centro Ricerche Ornitologiche Scanagatta
- FIPSAS - Federazione Italiana Pesca Sportiva e Attività Subacquee
- SHI – Societas Herpetologica Italica
- Spinning Club Italia
- FSLo – Federazione Speleologica Lombarda

Monitoring carried out by experts

Osmoderma eremita



La Citizen Science



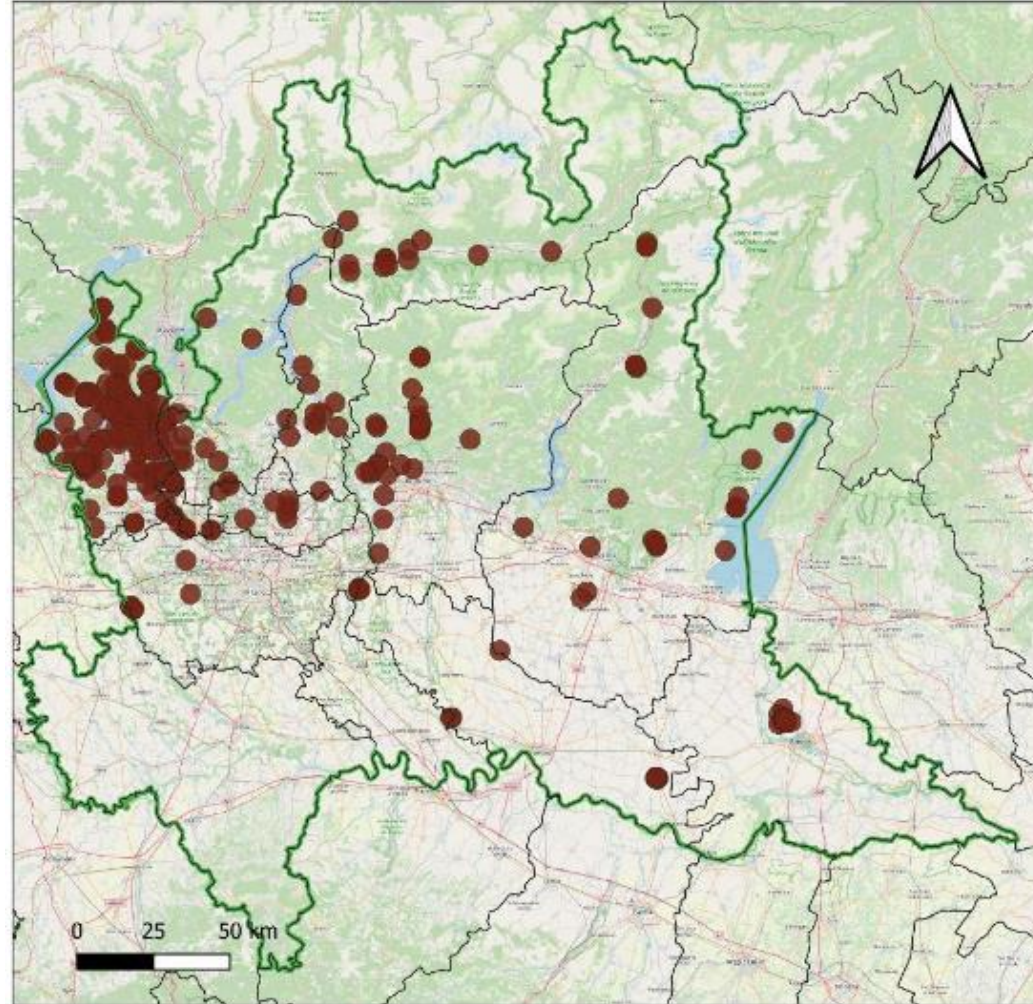
Biodiversità – Regione Lombardia



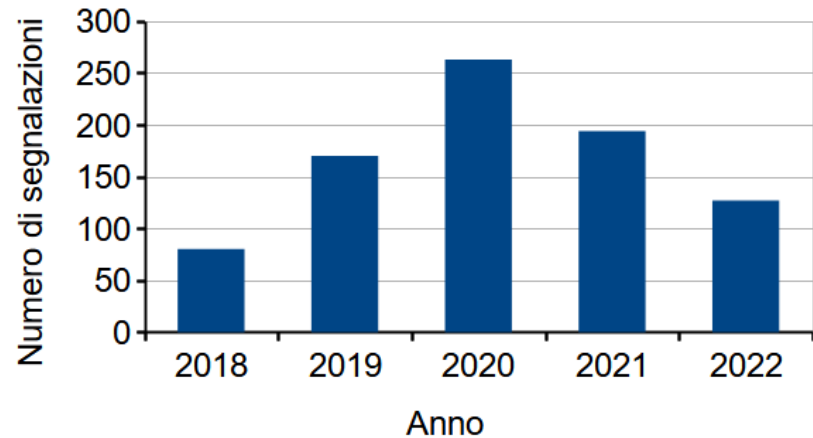
The project InNat



La Citizen Science

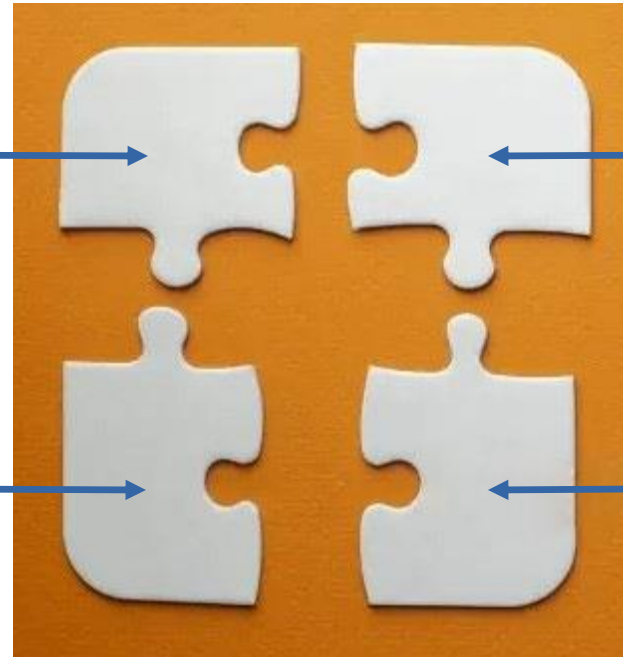


Segnalazioni di
Cervo volante (*Lucanus cervus*)
raccolte tra il 2017 ed il 2022
attraverso la piattaforma di
Citizen Science InNat
in Lombardia



segnalazioni_InNat
● *Lucanus cervus*

How to combine the data ?



**Territory
Network**

**Monitoring
by Experts**

**“Old data”
scientific
publications,
collections, ecc.**

Monitoring of butterflies - Alps



Tagfalter-Monitoring Deutschland



Anleitung
Bearbeitung: Elisabeth Kühn, Martin Muschke, Alexander Harpke, Reinart Feldmann,
Birgit Metzler, Martin Wiemers, Norbert Hirnensen und Josef Settle

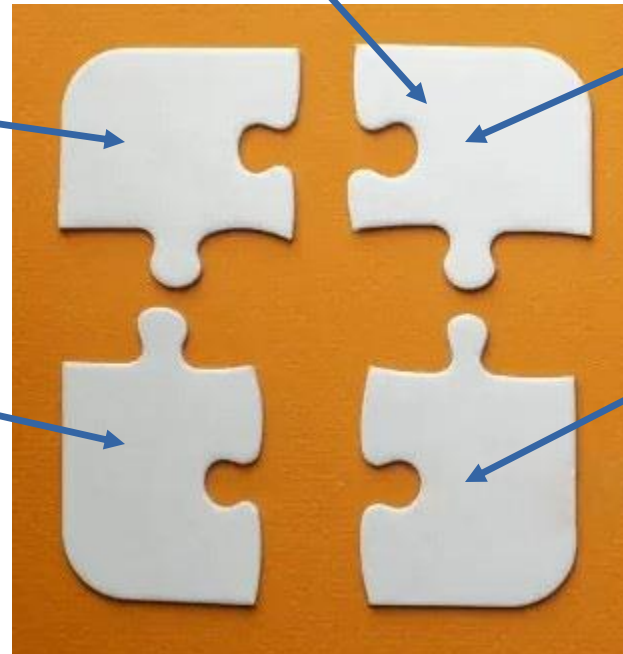


2013, *Entomologist's Gazette* 64: 225–234

On the distribution of *Pyrgus malvoides* (Elwes & Edwards, 1897) (Lepidoptera: Hesperidae) at the eastern part of its range



Monitoring of butterflies - Alps



2013, *Entomologist's Gazette* 64: 225–234

On the distribution of *Pyrgus malvoides* (Elwes & Edwards, 1897) (Lepidoptera: Hesperidae) at the eastern part of its range

Thanks for your attention !





Gestire2020 Partners



Collaboration with

